

 **Primary 3 - Term 4 (SA2) Science (School RS)** [Duplicate](#)[Print](#)[Delete](#)[Assign Test](#)**Test Introduction**[+ Add Introduction](#)**44 Questions** (60 Points)Question Bank: 19,439 Questions 

Test Questions

1 Test Assignment

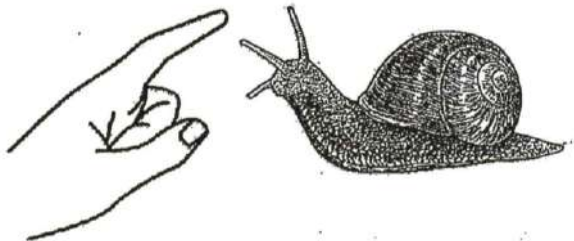
Question 1

Primary 3 Science » Primary 3 Science (Term 4)

2 pts

SECTION A (23 x 2 marks)

For each question from 1 to 23, four options are given. One of them is the correct answer.

- A snail hides itself in its shell when touched.

This shows that the snail is a living thing because it can _____

- A) breathe
- B) grow
- ✓ C) respond
- D) reproduce

Question Type: Multiple Choice
Randomize Answers: No
Date Added: Wed 8th Jul 2020
Last Modified: N/A
QID#: 22,278,160

[Answers](#) | [Edit](#) | [Duplicate](#) | [Used In](#) | [Reorder](#)[Remove From Test](#)**Question 2**

Primary 3 Science » Primary 3 Science (Term 4)

2 pts

Which one of the following statements is true for all insects?

- A) They live on land
- B) They have wings
- C) They feed on other animals
- ✓ D) They have the same number of legs

Question Type: Multiple Choice
Randomize Answers: No
Date Added: Wed 8th Jul 2020
Last Modified: N/A
QID#: 22,278,208

[Answers](#) | [Edit](#) | [Duplicate](#) | [Used In](#) | [Reorder](#)

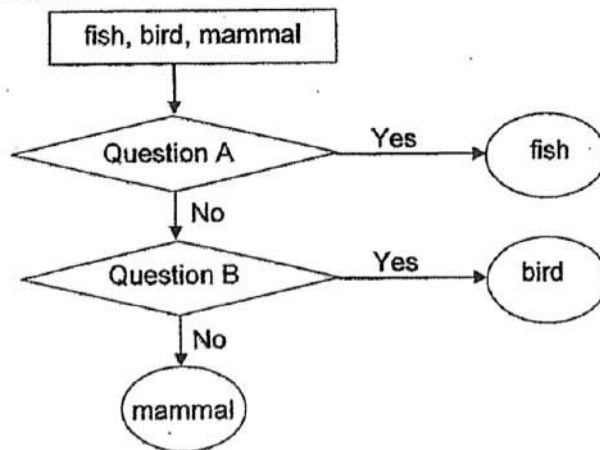
[Remove From Test](#)

Question 3

Primary 3 Science » Primary 3 Science (Term 4)

2 pts

3. Study the chart below.



Which of the following are the missing questions A and B?

	Question A	Question B
(1)	Does it have gills?	Does it have hair?
(2)	Does it have a tail?	Does it have wings?
(3)	Does it have hair?	Does it have a beak?
(4)	Does it have fins?	Does it have feathers?

- A) 1
- B) 2
- C) 3
- ✓ D) 4

Question Type: Multiple Choice
Randomize Answers: No
Date Added: Wed 8th Jul 2020
Last Modified: N/A
QID#: 22,278,222

[Answers](#) | [Edit](#) | [Duplicate](#) | [Used In](#) | [Reorder](#)

[Remove From Test](#)

Question 4

Primary 3 Science » Primary 3 Science (Term 4)

2 pts

Which one of the following living things can bear flowers?

(1) fern



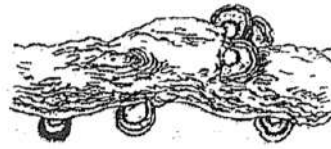
(2) banana plant



(3) mushroom



(4) bracket fungi



A) 1

✓ B) 2

C) 3

D) 4

Question Type: Multiple Choice
 Randomize Answers: No
 Date Added: Wed 8th Jul 2020
 Last Modified: N/A
 QID#: 22,278,234

[Answers](#) | [Edit](#) | [Duplicate](#) | [Used In](#) | [Reorder](#)

[Remove From Test](#)

Question 5

Primary 3 Science » Primary 3 Science (Term 4)

2 pts

Ben compared two living things, P and Q.

Difference: P does not make its own food but Q makes its own food.

Similarity: Both P and Q reproduce from spores.

What could P and Q be?

	P	Q
(1)	fern	mushroom
(2)	flowering plant	mushroom
(3)	fern	flowering plant
(4)	mushroom	fern

A) 1

B) 2

C) 3

✓ D) 4

Question Type: Multiple Choice
Randomize Answers: No
Date Added: Wed 8th Jul 2020
Last Modified: N/A
QID#: 22,278,247

↗ Answers | ✎ Edit | 📄 Duplicate | ↩ Used In | ⚙ Reorder

Remove From Test

Question 6

Primary 3 Science » Primary 3 Science (Term 4)

2 pts

How is bacteria similar to fungi?

- A) Both are micro-organisms
- B) Both reproduce by spores
- C) Both are able to make food
- ✓ D) Both need air, food and water

Question Type: Multiple Choice
Randomize Answers: No
Date Added: Wed 8th Jul 2020
Last Modified: N/A
QID#: 22,278,277

↗ Answers | ✎ Edit | 📄 Duplicate | ↩ Used In | ⚙ Reorder

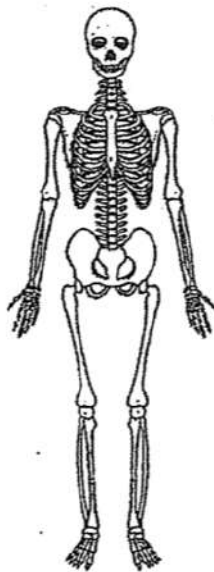
Remove From Test

Question 7

Primary 3 Science » Primary 3 Science (Term 4)

2 pts

Study the diagram below.



The above diagram shows the _____ system.

x

- ✓ A) skeletal
- B) digestive

- C) muscular
- D) respiratory

Question Type: Multiple Choice
Randomize Answers: No
Date Added: Wed 8th Jul 2020
Last Modified: N/A
QID#: 22,278,299

[Answers](#) | [Edit](#) | [Duplicate](#) | [Used In](#) | [Reorder](#)

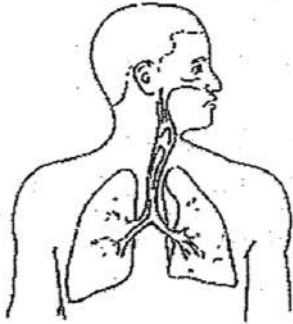
[Remove From Test](#)

Question 8

Primary 3 Science » Primary 3 Science (Term 4)

2 pts

The picture below shows an organ system in the human body.



Which of the following statements are true of the organ system?

- A : The organ system is made up of different parts.
 - B : Without the organ system, oxygen cannot be absorbed into the body.
 - C : The organ system removes carbon dioxide from the body.
-
- A) A and B only
 - B) A and C only
 - C) B and C only
 - ✓ D) A, B and C only

Question Type: Multiple Choice
Randomize Answers: No
Date Added: Wed 8th Jul 2020
Last Modified: N/A
QID#: 22,278,331

[Answers](#) | [Edit](#) | [Duplicate](#) | [Used In](#) | [Reorder](#)

[Remove From Test](#)

Question 9

Primary 3 Science » Primary 3 Science (Term 4)

2 pts

Study the description about an organ system in the human body as shown below.

- Produces digestive juices to break down food into simpler substances.
- Works together with another organ system A to push food down from one part to another.

Which of the following is organ system A?

- (1) skeletal system
- (2) muscular system
- (3) respiratory system
- (4) circulatory system

- A) skeletal system
- ✓ B) muscular system
- C) respiratory system
- D) circulatory system

Question Type: Multiple Choice
Randomize Answers: No
Date Added: Wed 8th Jul 2020
Last Modified: N/A
QID#: 22,278,735

[Answers](#) | [Edit](#) | [Duplicate](#) | [Used In](#) | [Reorder](#)

[Remove From Test](#)

Question 10

Primary 3 Science » Primary 3 Science (Term 4)

2 pts

- Organ systems, P and Q are found in the human body. One of the functions of each organ system is described in the table below.

Organ System P	Organ System Q
<ul style="list-style-type: none"> • Works with another body system to enable different parts of the body to move. 	<ul style="list-style-type: none"> • Stores undigested food until it is removed.

Identify organ system P and organ system Q.

	Organ System P	Organ System Q
(1)	skeletal	digestive
(2)	circulatory	digestive
(3)	skeletal	circulatory
(4)	muscular	respiratory

- ✓ A) 1
- B) 2
- C) 3
- D) 4

Question Type: Multiple Choice
Randomize Answers: No
Date Added: Wed 8th Jul 2020
Last Modified: N/A
QID#: 22,278,753

[Answers](#) | [Edit](#) | [Duplicate](#) | [Used In](#) | [Reorder](#)

[Remove From Test](#)

Question 11

Primary 3 Science » Primary 3 Science (Term 4)

2 pts

Which one of the following shows correctly how the food travels through a human digestive system in a healthy person?

- A) anus → large intestine → small intestine → stomach → gullet → mouth
- B) stomach → gullet → mouth → anus → large intestine → small intestine
- C) mouth → gullet → stomach → large intestine → small intestine → anus
- ✓ D) mouth → gullet → stomach → small intestine → large intestine → anus

Question Type: Multiple Choice
Randomize Answers: No
Date Added: Wed 8th Jul 2020
Last Modified: N/A
QID#: 22,278,791

[Answers](#) | [Edit](#) | [Duplicate](#) | [Used In](#) | [Reorder](#)

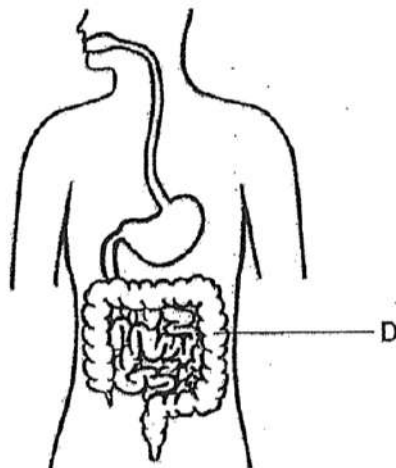
[Remove From Test](#)

Question 12

Primary 3 Science » Primary 3 Science (Term 4)

2 pts

The diagram below shows a human digestive system.



What would possibly happen when organ D is not functioning properly?

- A) More digestive juices are produced
- ✓ B) Watery faeces will be passed out from the body
- C) Food will be broken up into smaller pieces slowly
- D) Undigested food will be removed from the stomach directly

Question Type: Multiple Choice
Randomize Answers: No
Date Added: Wed 8th Jul 2020
Last Modified: N/A
QID#: 22,278,864

[Answers](#) | [Edit](#) | [Duplicate](#) | [Used In](#) | [Reorder](#)

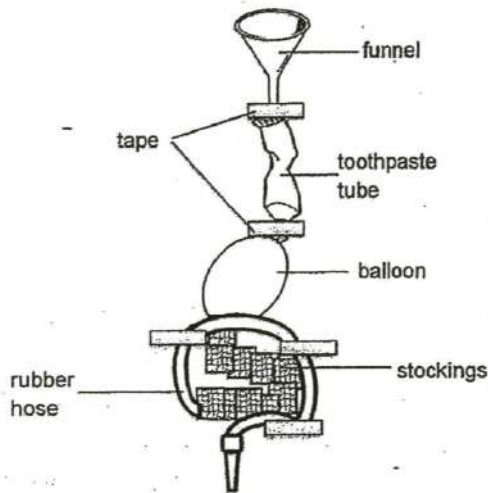
[Remove From Test](#)

Question 13

Primary 3 Science » Primary 3 Science (Term 4)

2 pts

13. A model of the human digestive system was built as shown below. Each part of the model represents a part of the human digestive system. Use the model below to answer questions 13 and 14.



Which one of the following part of the model correctly represents the part of the human digestive system?

	Part of the Model	Part of the Human Digestive System
(1)	balloon	stomach
(2)	funnel	small intestine
(3)	stocking	gullet
(4)	toothpaste tube	mouth

- ✓ A) 1
 B) 2
 C) 3
 D) 4

Question Type: Multiple Choice
Randomize Answers: No
Date Added: Wed 8th Jul 2020
Last Modified: N/A
QID#: 22,278,881

[Answers](#) | [Edit](#) | [Duplicate](#) | [Used In](#) | [Reorder](#)

[Remove From Test](#)

Question 14

Primary 3 Science » Primary 3 Science (Term 4)

2 pts

If the rubber hose is a large intestine, it cannot perform the function of a large intestine. Which one of the following best explains why the rubber hose cannot perform the function of a large intestine?

- ✓ A) The rubber hose cannot absorb water
- B) The rubber hose cannot absorb digested food
- C) The rubber hose cannot produce digestive juices
- D) The rubber hose cannot cut food into small pieces

Question Type: Multiple Choice
Randomize Answers: No
Date Added: Wed 8th Jul 2020
Last Modified: N/A
QID#: 22,278,909

[Answers](#) | [Edit](#) | [Duplicate](#) | [Used In](#) | [Reorder](#)

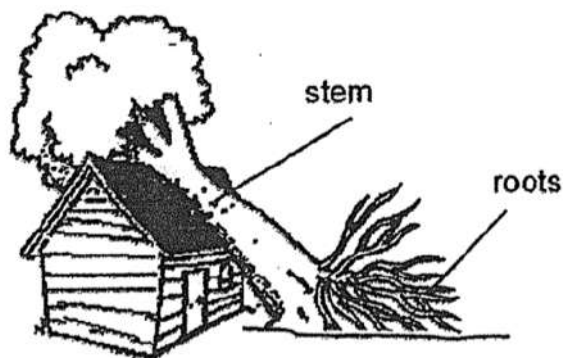
[Remove From Test](#)

Question 15

Primary 3 Science » Primary 3 Science (Term 4)

2 pts

On a stormy day, a tree fell onto a house as shown below.



Which of the following best explains why the tree fell?

- A) The stem is not strong
- B) The stem cannot support the tree
- C) The roots are not able to absorb water
- ✓ D) The roots are not able to hold it firmly to the ground

Question Type: Multiple Choice
Randomize Answers: No
Date Added: Wed 8th Jul 2020
Last Modified: N/A
QID#: 22,278,919

[Answers](#) | [Edit](#) | [Duplicate](#) | [Used In](#) | [Reorder](#)

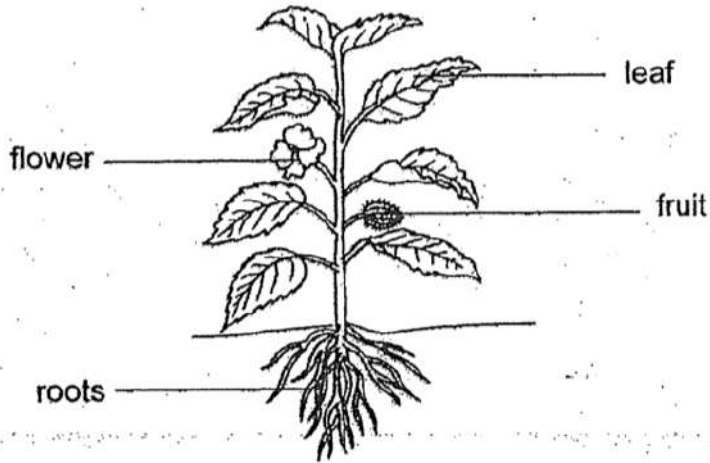
[Remove From Test](#)

Question 16

Primary 3 Science » Primary 3 Science (Term 4)

2 pts

Study the plant below.



Which part of the plant makes food?

- ✓ A) leaf
- B) fruit
- C) flower
- D) roots

Question Type: Multiple Choice
Randomize Answers: No
Date Added: Wed 8th Jul 2020
Last Modified: N/A
QID#: 22,278,929

[Answers](#) | [Edit](#) | [Duplicate](#) | [Used In](#) | [Reorder](#)

[Remove From Test](#)

Question 17

Primary 3 Science » Primary 3 Science (Term 4)

2 pts

There are three similar adult plants, A, B and C. They are placed under the sun and watered every day. One part of each plant is removed completely as shown in the table below.

Plant	Part of the Plant that is Removed Completely
A	roots
B	fruits
C	flowers

After one month, which of the following plant(s) will not die?

- A) A only
- B) B only
- C) A and C only
- ✓ D) B and C only

Question Type: Multiple Choice
Randomize Answers: No
Date Added: Wed 8th Jul 2020
Last Modified: N/A
QID#: 22,278,944

[Answers](#) | [Edit](#) | [Duplicate](#) | [Used In](#) | [Reorder](#)

[Remove From Test](#)

Question 18

Primary 3 Science » Primary 3 Science (Term 4)

2 pts

Study the table below.

X	Y
chopsticks	wood
vase	ceramic
knife	metal

Which one of the following are suitable headings in place of X and Y?

	X	Y
(1)	Objects	Materials
(2)	Objects	Uses
(3)	Materials	Properties
(4)	Materials	Uses

- ✓ A) 1
 B) 2
 C) 3
 D) 4

Question Type: Multiple Choice
Randomize Answers: No
Date Added: Wed 8th Jul 2020
Last Modified: N/A
QID#: 22,278,952

[Answers](#) | [Edit](#) | [Duplicate](#) | [Used In](#) | [Reorder](#)

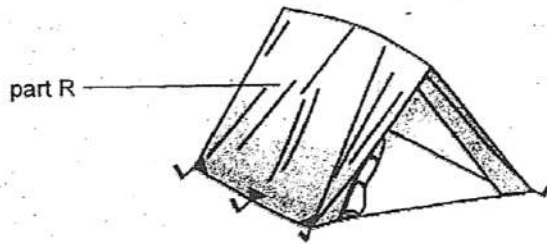
[Remove From Test](#)

Question 19

Primary 3 Science » Primary 3 Science (Term 4)

2 pts

The camping tent shown below keeps out the rain and the sun. It can be folded easily when not in use.



Which of the following most correctly states the properties of part R?

	Allows light to pass through	Waterproof	Flexible
(1)	Yes	Yes	Yes
(2)	Yes	No	No
(3)	No	Yes	Yes
(4)	No	No	No

- A) 1
 B) 2
 ✓ C) 3
 D) 4

Question Type: Multiple Choice
Randomize Answers: No
Date Added: Wed 8th Jul 2020
Last Modified: N/A
QID#: 22,278,962

[Answers](#) | [Edit](#) | [Duplicate](#) | [Used In](#) | [Reorder](#)

[Remove From Test](#)

Question 20

Primary 3 Science » Primary 3 Science (Term 4)

2 pts

Which of the following can be attracted by a magnet?

- ✓ A) iron ball
 B) rubber ball
 C) plastic ball
 D) wooden ball

Question Type: Multiple Choice
Randomize Answers: No
Date Added: Wed 8th Jul 2020
Last Modified: N/A
QID#: 22,278,973

[Answers](#) | [Edit](#) | [Duplicate](#) | [Used In](#) | [Reorder](#)

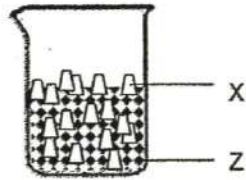
[Remove From Test](#)

Question 21

Primary 3 Science » Primary 3 Science (Term 4)

2 pts

Rajan was given a beaker containing small pieces of two materials, X and Z, mixed together.



The properties of X and Z are given in the table below.

	Can it be attracted by a magnet?	Does it allow light to pass through?	Does it float on water?	Is it waterproof?
X	No	Yes	No	Yes
Z	Yes	No	No	Yes

Which property should Rajan use in order to separate the two materials in the shortest time?

- A) It is waterproof or absorbent
- B) It is able to float or sink in water
- ✓ C) It can be or cannot be attracted by the magnet
- D) It allows or does not allow light to pass through it

Question Type: Multiple Choice
 Randomize Answers: No
 Date Added: Wed 8th Jul 2020
 Last Modified: N/A
 QID#: 22,278,989

[Answers](#) |
 [Edit](#) |
 [Duplicate](#) |
 [Used In](#) |
 [Reorder](#)

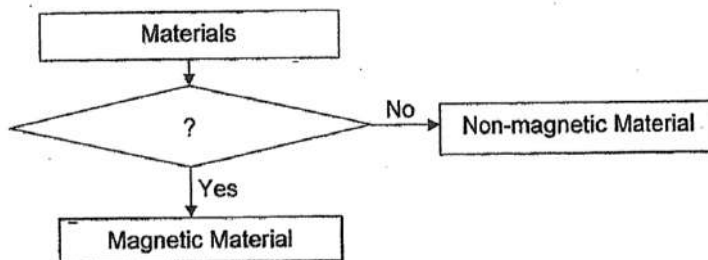
[Remove From Test](#)

Question 22

Primary 3 Science » Primary 3 Science (Term 4)

2 pts

The diagram below shows a flow chart.



Which one of following is the missing question in the box?

- A) Is it a metal?
- ✓ B) Can it be made into a magnet?
- C) Can it be repelled by a magnet?
- D) Does it have a north and south pole?

Question Type: Multiple Choice

Randomize Answers: No
 Date Added: Wed 8th Jul 2020
 Last Modified: N/A
 QID#: 22,279,005

Answers | Edit | Duplicate | Used In | Reorder

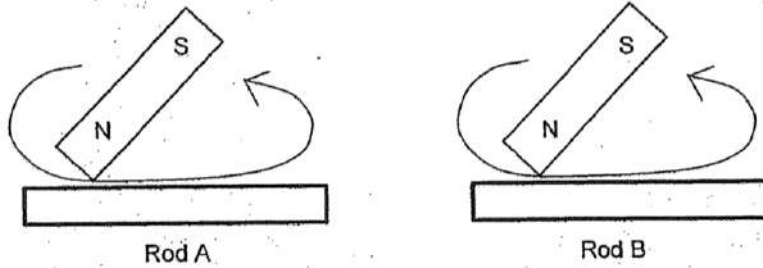
Remove From Test

Question 23

Primary 3 Science » Primary 3 Science (Term 4)

2 pts

Jill stroked two similar iron rods, A and B, with the same magnet as shown below.



Both rods became magnets.
 Rod A attracted fewer pins than rod B.

Which one of the following shows the possible number of strokes used for rod A and rod B respectively?

	Rod A	Rod B
(1)	30	30
(2)	15	30
(3)	15	15
(4)	30	15

- A) 1
- ✓ B) 2
- C) 3
- D) 4

Question Type: Multiple Choice
 Randomize Answers: No
 Date Added: Wed 8th Jul 2020
 Last Modified: N/A
 QID#: 22,279,020

Answers | Edit | Duplicate | Used In | Reorder

Remove From Test

Question 24

Primary 3 Science » Primary 3 Science (Term 4)

1 pt

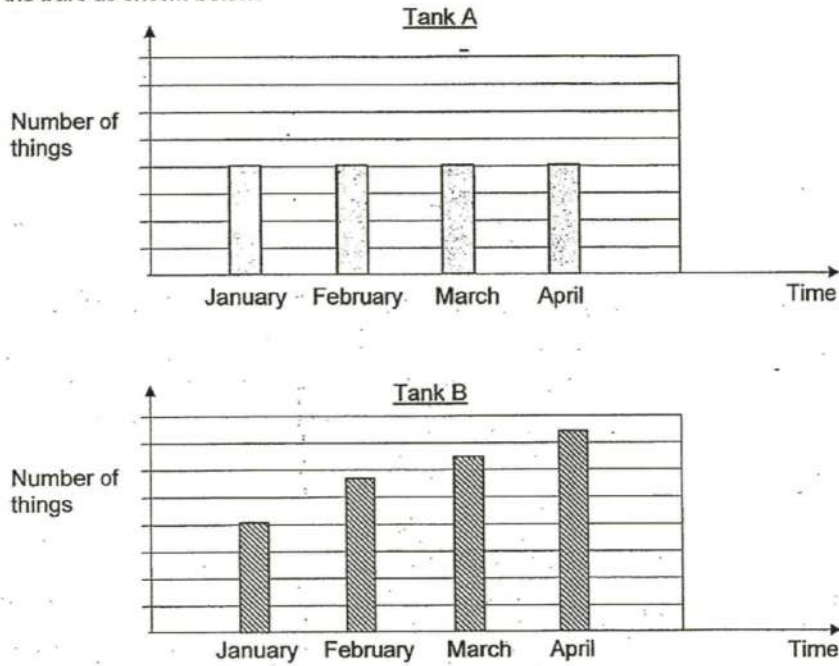
SECTION B

Type your answers clearly in the spaces provided.

This section is designed for extended answers that parent/ teacher will have to assign and guide child to attempt after the test has been completed.

Grading: This question type is not graded on this system and will not affect the final score as it was designed in such a way that it requires manual assistance.

Ron conducted an experiment from January to April. He set up two tanks, A and B, with two different things. Both tanks were provided with air, water and food. Every month, Ron counted the number of things in both tanks and drew the bars as shown below.



- (a) Based on the graph above, which tank possibly contained a living thing? Write A or B in the blank. [1]

Tank _____

- A) Tank A
 B) Tank B

Question Type: Multiple Choice
Randomize Answers: No
Date Added: Tue 14th Jul 2020
Last Modified: N/A
QID#: 22,411,430

[Answers](#) | [Edit](#) | [Duplicate](#) | [Used In](#) | [Reorder](#)

[Remove From Test](#)

Question 25

Primary 3 Science » Primary 3 Science (Term 4)

0 pts

- (b) Explain how you arrive at your answer in (a). [1]

Question Type: Essay
Date Added: Wed 8th Jul 2020
Last Modified: Tue 14th Jul 2020
QID#: 22,279,139

Correctly answered feedback

b) Tank B, is most likely to have a living thing as the number of things got larger and larger as livings things reproduce

Incorrectly answered feedback

b) Tank B, is most likely to have a living thing as the number of things got larger and larger as livings things reproduce

[Answers](#) | [Edit](#) | [Duplicate](#) | [Used In](#) | [Reorder](#)

[Remove From Test](#)

Question 26

Primary 3 Science » Primary 3 Science (Term 4)

1 pt

A scientist discovered an animal Y in a jungle. He made an observation of the animal as listed below.

Feeds its young with milk

(a) Which group of animals does Y belong to? [1]

Accepted answers:

✓ Mammals

Question Type: Free Text
Date Added: Tue 14th Jul 2020
Last Modified: N/A
QID#: 22,411,477

[Answers](#) | [Edit](#) | [Duplicate](#) | [Used In](#) | [Reorder](#)

[Remove From Test](#)

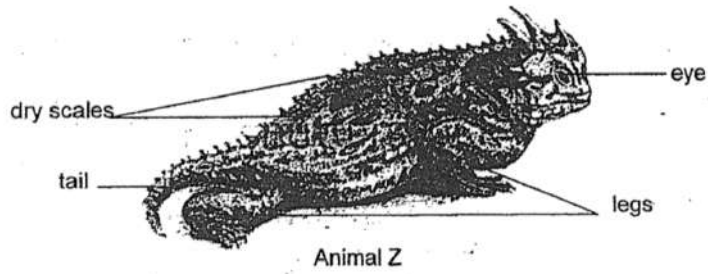
Question 27

Primary 3 Science » Primary 3 Science (Term 4)

0 pts

- (b) Write down another characteristic of animal Y which other groups of animals do not have. [1]

The picture below shows another animal, Z, that the scientist saw in the forest.



- (c) Which group of animals does Z belong to? Give your reason. [2]

Question Type: Essay
 Date Added: Wed 8th Jul 2020
 Last Modified: Tue 14th Jul 2020
 QID#: 22,279,159

Correctly answered feedback

- b) Animal Y has hair
 c) Reptile, it is because reptiles have dry scales and animal Z also has dry scales

Incorrectly answered feedback

- b) Animal Y has hair
 c) Reptile, it is because reptiles have dry scales and animal Z also has dry scales

[Answers](#) | [Edit](#) | [Duplicate](#) | [Used In](#) | [Reorder](#)

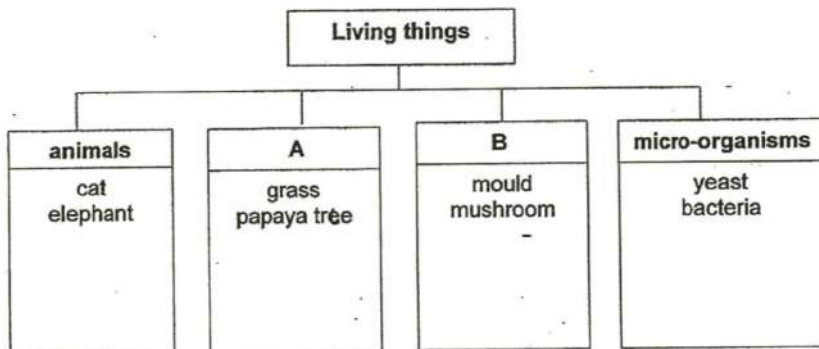
[Remove From Test](#)

Question 28

Primary 3 Science » Primary 3 Science (Term 4)

0.5 pts

Study the classification table below.



- (a) Write down suitable headings for A and B. [1]

A: _____

Accepted answers:

✓ plants

Question Type: Free Text
Date Added: Tue 14th Jul 2020
Last Modified: N/A
QID#: 22,411,525

Answers | Edit | Duplicate | Used In | Reorder

Remove From Test

Question 29

Primary 3 Science » Primary 3 Science (Term 4) 0.5 pts

B: _____

Accepted answers:

✓ fungi

Question Type: Free Text
Date Added: Tue 14th Jul 2020
Last Modified: N/A
QID#: 22,411,530

Answers | Edit | Duplicate | Used In | Reorder

Remove From Test

Question 30

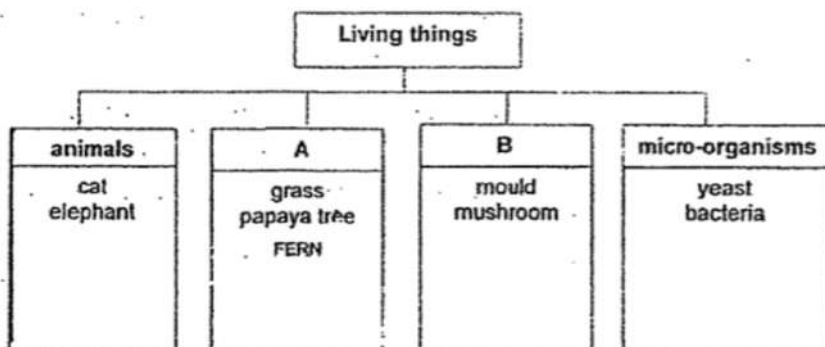
Primary 3 Science » Primary 3 Science (Term 4) 0 pts

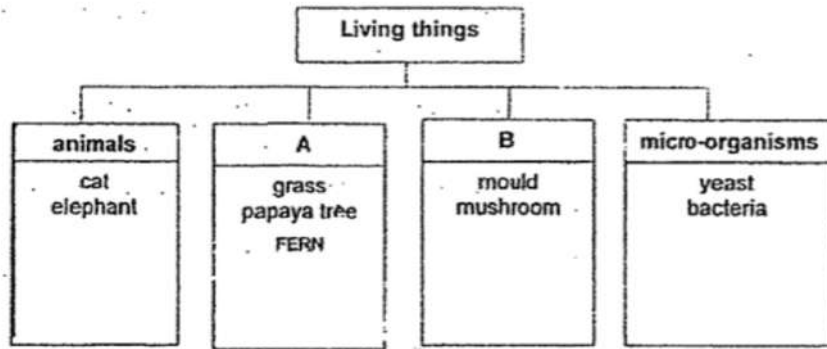
(b) Classify 'fern' using the classification table above. Write 'Fern' in the correct box. [1]

Question Type: Essay
Date Added: Wed 8th Jul 2020
Last Modified: Tue 14th Jul 2020
QID#: 22,279,313

Correctly answered feedback

b)



Incorrectly answered feedback**b)**

[Answers](#) |
 [Edit](#) |
 [Duplicate](#) |
 [Used In](#) |
 [Reorder](#)

[Remove From Test](#)

Question 31

Primary 3 Science » Primary 3 Science (Term 4)

2 pts

Match the options below:

Clue	Match
Allows the exchange of gases to take place Points: +0.5 -0	respiratory system
Carries food, water and oxygen to various parts of the body Points: +0.5 -0	circulatory system
Support the body and gives it shape Points: +0.5 -0	skeletal system
Helps different parts of the body to move Points: +0.5 -0	muscular system

Question Type: Matching
Shuffle Mode: Shuffle Matches Only
Date Added: Wed 8th Jul 2020
Last Modified: N/A
QID#: 22,279,396

[Answers](#) |
 [Edit](#) |
 [Duplicate](#) |
 [Used In](#) |
 [Reorder](#)

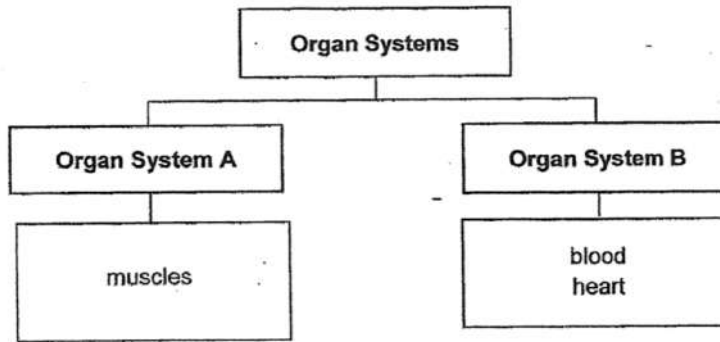
[Remove From Test](#)

Question 32

Primary 3 Science » Primary 3 Science (Term 4)

1 pt

Susan classified the parts of the organ systems as shown below.



(a) Provide a suitable heading for the following:

[2]

Organ System A: _____

Accepted answers:

- ✓ muscular
- ✓ muscular system

Question Type: Free Text
 Date Added: Tue 14th Jul 2020
 Last Modified: N/A
 QID#: 22,411,647

[Answers](#) | [Edit](#) | [Duplicate](#) | [Used In](#) | [Reorder](#)

[Remove From Test](#)

Question 33

Primary 3 Science » Primary 3 Science (Term 4)

1 pt

Organ System B: _____

Accepted answers:

- ✓ circulatory
- ✓ circulatory system

Question Type: Free Text
 Date Added: Tue 14th Jul 2020
 Last Modified: N/A
 QID#: 22,411,659

[Answers](#) | [Edit](#) | [Duplicate](#) | [Used In](#) | [Reorder](#)

[Remove From Test](#)

Question 34

Primary 3 Science » Primary 3 Science (Term 4)

1 pt

(b) In which organ system, A or B, should Susan place the "blood vessels"? [1]

Organ System

Accepted answers:

- ✓ Circulatory system
- ✓ Circulatory

Question Type: Free Text

Date Added: Tue 14th Jul 2020

Last Modified: N/A

QID#: 22,411,669

[Answers](#) | [Edit](#) | [Duplicate](#) | [Used In](#) | [Reorder](#)

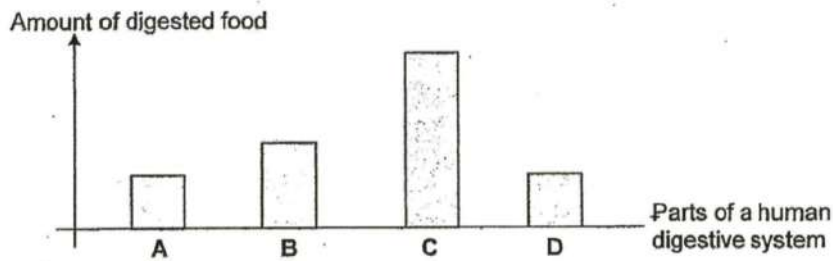
[Remove From Test](#)

Question 35

Primary 3 Science » Primary 3 Science (Term 4)

2 pts

The graph below shows the amount of digested food in different parts, A, B, C and D of a human digestive system. The parts are not in the correct order.



(a) Using the results, identify parts C and D of a human digestive system by completing the table below.

Part A is the gullet. Part B is the stomach. They have already been done for you. [2]

Parts of a Human Digestive System	Part
gullet	A
mouth	
stomach	B
small intestine	

Clue

Match

mouth

D

Points: +1 -0

small intestine

C

Points: +1 -0

Question Type: Matching
Shuffle Mode: Shuffle Matches Only
Date Added: Tue 14th Jul 2020
Last Modified: N/A
QID#: 22,411,741

[Answers](#) | [Edit](#) | [Duplicate](#) | [Used In](#) | [Reorder](#)

[Remove From Test](#)

Question 36

Primary 3 Science » Primary 3 Science (Term 4)

1 pt

(b) Which organ system will transport the digested food from the small intestine to other parts of the body? [1]

Accepted answers:

- ✓ circulatory
- ✓ circulatory system

Question Type: Free Text
Date Added: Tue 14th Jul 2020
Last Modified: N/A
QID#: 22,411,780

[Answers](#) | [Edit](#) | [Duplicate](#) | [Used In](#) | [Reorder](#)

[Remove From Test](#)

Question 37

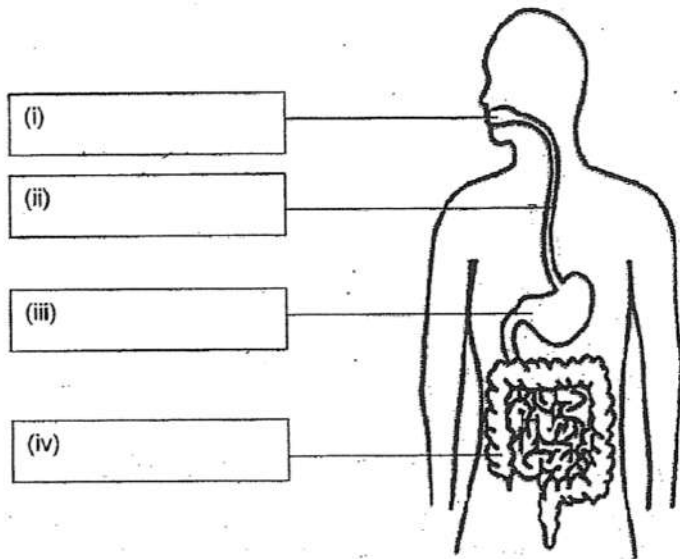
Primary 3 Science » Primary 3 Science (Term 4)

0 pts

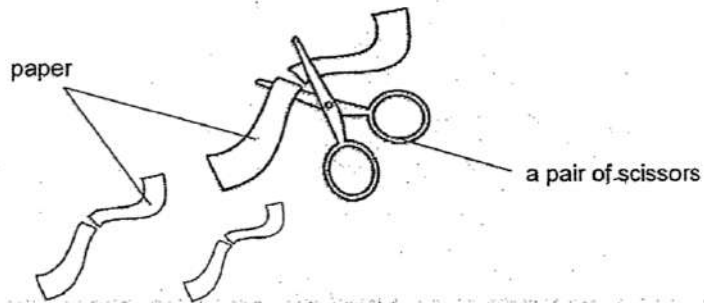
The diagram below shows some organs in the digestive system.

(a) Label the organs.

[2]



The diagram below shows a pair of scissors used to cut paper.

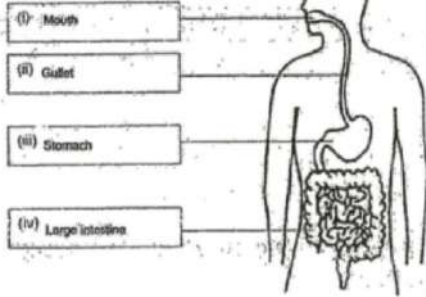


(b) Which organ in the digestive system has the similar function as a pair of scissors? Give a reason to your answer. [2]

Question Type: Essay
 Date Added: Wed 8th Jul 2020
 Last Modified: Tue 14th Jul 2020
 QID#: 22,279,513

Correctly answered feedback

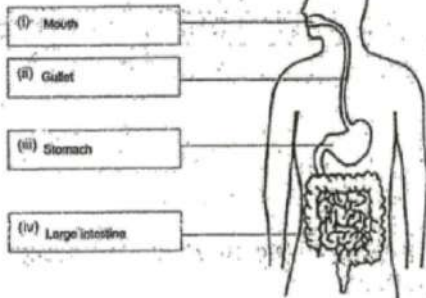
a)



b) The mouth . The pair of scissors cuts paper into smaller strips just like the teeth in the mouth that chews on food to turn it into smaller pieces.

Incorrectly answered feedback

a)



b) The mouth . The pair of scissors cuts paper into smaller strips just like the teeth in the mouth that chews on food to turn it into smaller pieces.

[Answers](#) | [Edit](#) | [Duplicate](#) | [Used In](#) | [Reorder](#)

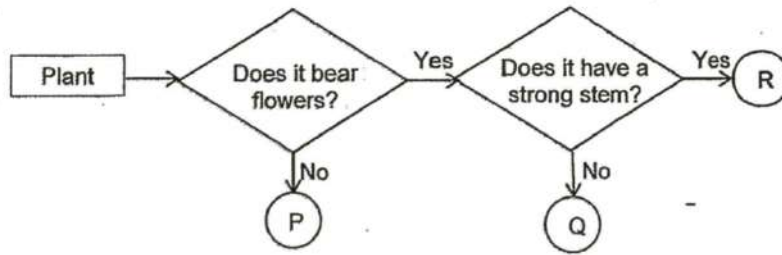
[Remove From Test](#)

Question 38

Primary 3 Science » Primary 3 Science (Term 4)

0 pts

Study the flowchart below.



- (a) State one characteristic of plant Q. [1]

- (b) State one difference between plant P and plant Q. [1]

- (c) State one similarity between plant Q and plant R. [1]

Question Type: Essay
 Date Added: Wed 8th Jul 2020
 Last Modified: Tue 14th Jul 2020
 QID#: 22,279,536

Correctly answered feedback

- a) Plant Q bears flowers
- b) Plant Q bears flower but plant P does not bear flowers
- C) Plant Q and Plant R bear flowers

Incorrectly answered feedback

- a) Plant Q bears flowers
- b) Plant Q bears flower but plant P does not bear flowers
- C) Plant Q and Plant R bear flowers

[Answers](#) | [Edit](#) | [Duplicate](#) | [Used In](#) | [Reorder](#)

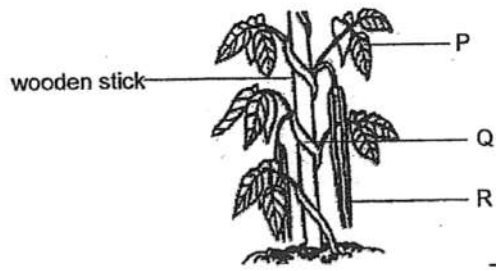
[Remove From Test](#)

Question 39

Primary 3 Science » Primary 3 Science (Term 4)

1 pt

Arul observed a plant growing in his garden.



(a) Name parts P and Q shown in the plant above. [2]

Part P: _____

Accepted answers:

✓ leaf

Question Type: Free Text
 Date Added: Tue 14th Jul 2020
 Last Modified: N/A
 QID#: 22,411,958

[Answers](#) | [Edit](#) | [Duplicate](#) | [Used In](#) | [Reorder](#)

[Remove From Test](#)

Question 40

Primary 3 Science » Primary 3 Science (Term 4)

1 pt

Part Q: _____

Accepted answers:

✓ stem

Question Type: Free Text
 Date Added: Tue 14th Jul 2020
 Last Modified: N/A
 QID#: 22,411,968

[Answers](#) | [Edit](#) | [Duplicate](#) | [Used In](#) | [Reorder](#)

[Remove From Test](#)

Question 41

Primary 3 Science » Primary 3 Science (Term 4)

0 pts

(b) How does the wooden stick help the plant?

[1]

(c) Part R is the fruit of the plant. What is found inside R that helps it to reproduce?

[1]

Question Type: Essay
Date Added: Wed 8th Jul 2020
Last Modified: Tue 14th Jul 2020
QID#: 22,279,556

Correctly answered feedback

- b) The wooden stick helps the plant by supporting it
- c) The seeds are found in part R, the seed can help the plant in reproduction

Incorrectly answered feedback

- b) The wooden stick helps the plant by supporting it
- c) The seeds are found in part R, the seed can help the plant in reproduction

[Answers](#) | [Edit](#) | [Duplicate](#) | [Used In](#) | [Reorder](#)

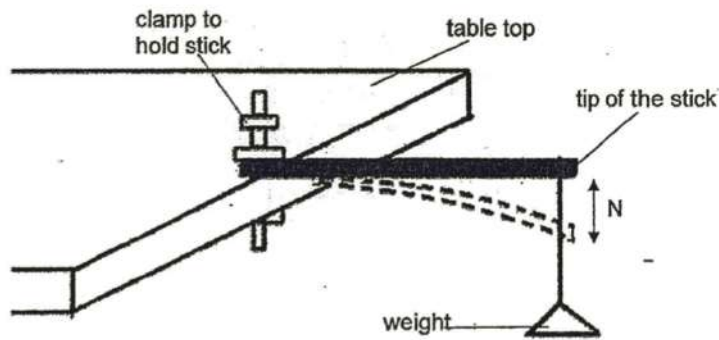
[Remove From Test](#)

Question 42

Primary 3 Science » Primary 3 Science (Term 4)

0 pts

Baoli had the following set-up for her experiment.



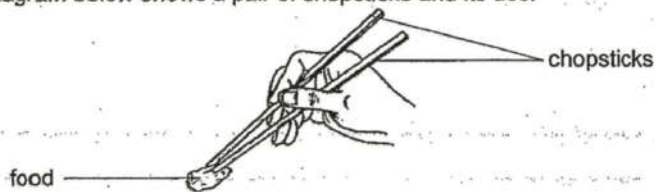
She measured N , the distance travelled by the tip of the stick when a weight is hung on it. She repeated the experiment with stick Y which is made of a different material.

- (a) What property was Baoli testing? [1]

Baoli recorded her results as shown below.

	Stick X	Stick Y
N (Distance travelled by the tip of the stick when a weight is hung on it.)	5 cm	0 cm

The diagram below shows a pair of chopsticks and its use.



- (b) Which stick, X or Y, is more suitable for making a pair of chopsticks? Explain your answer. [2]

Question Type: Essay
 Date Added: Wed 8th Jul 2020
 Last Modified: Tue 14th Jul 2020
 QID#: 22,279,579

Correctly answered feedback

- a) She was testing the flexibility of the material
 b) Y, because it was not flexible. While Y is stiff, X is not, Y did not bend compared to X when a weight is added

Incorrectly answered feedback

- a) She was testing the flexibility of the material
 b) Y, because it was not flexible. While Y is stiff, X is not, Y did not bend compared to X when a weight is added

Answers | Edit | Duplicate | Used In | Reorder

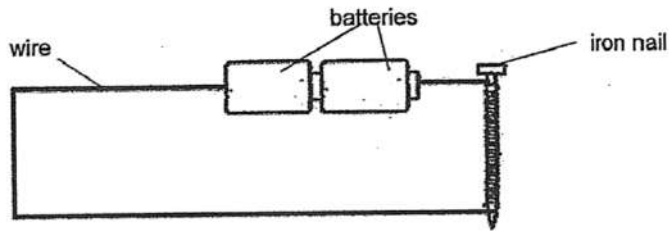
Remove From Test

Question 43

Primary 3 Science » Primary 3 Science (Term 4)

0 pts

Sammy made an electromagnet as shown below.



- (a) What could Sammy do to find out if the iron nail had become an electromagnet? [1]

- (b) State 2 changes that Sammy could do to increase the strength of the electromagnet. [2]

(i) _____

(ii) _____

Question Type: Essay
 Date Added: Wed 8th Jul 2020
 Last Modified: Tue 14th Jul 2020
 QID#: 22,279,597

Correctly answered feedback

- a) Put the iron nail near to some iron clips and observe whether it attracts any iron clips.
 bi) He can coil the wire more times on the iron nail.
 bii) He can use more dry cell batteries

Incorrectly answered feedback

- a) Put the iron nail near to some iron clips and observe whether it attracts any iron clips.
 bi) He can coil the wire more times on the iron nail.
 bii) He can use more dry cell batteries

[Answers](#) | [Edit](#) | [Duplicate](#) | [Used In](#) | [Reorder](#)

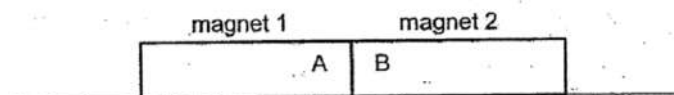
[Remove From Test](#)

Question 44

Primary 3 Science » Primary 3 Science (Term 4)

1 pt

Sammy placed two magnets together as shown below.



- (c) Fill in the blank below with the correct word.

Based on the above observation, Sammy inferred that A and B are

_____ poles.

[1]

Accepted answers:

✓ unlike

Question Type: *Free Text*
Date Added: *Tue 14th Jul 2020*
Last Modified: *N/A*
QID#: *22,412,096*

[↗ Answers](#) | [✎ Edit](#) | [📄 Duplicate](#) | [📌 Used In](#) | [⬇ Reorder](#)

[Remove From Test](#)

www.classmarker.com

